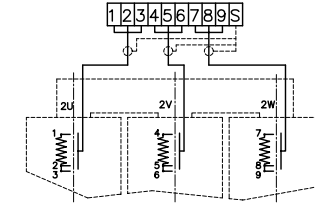
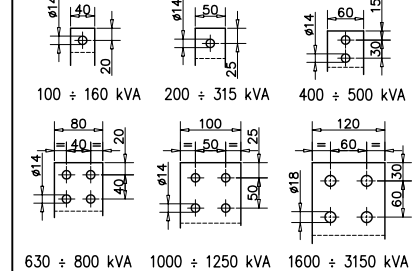


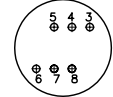
SCHEMA COLLEG. 3 PT100 OHM



TERMINALE SECONDARIO

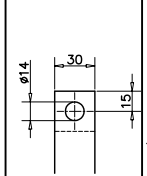


MORSETTIERA DI REGOLAZIONE PRIMARIO



VARIAZ. %	POSIZIONI
+5%	6-5
+2.5%	5-7
0	7-4
-2.5%	4-8
-5%	8-3

TERMINALE PRIMARIO



- 1 GOLFARI DI SOLLEVAMENTO
- 2 TERMINALE SECONDARIO
- 3 TARGA CARATTERISTICHE
- 4 TERMINALE NEUTRO
- 5 MORSETTIERA VARIAZ. PRIMARIO
- 6 AVVOLGIMENTO PRIMARIO
- 7 NUCLEO
- 8 ATTACCHI PER TRAINO
- 9 PIATRINA DI TERRA
- 10 CARRELLO REVERSIBILE
- 11 SCATOLA CONNESSIONI
- 12 TERMINALE PRIMARIO
- 13 BOX IP20-23-31

Ci riserviamo di apportare modifiche ai dati sotto indicati senza nessun preavviso

kVA	a (mm)	b (mm)	c (mm)	d (mm)	e (mm)	p (mm)	q (mm)	r (mm)	s (mm)	t (mm)	Peso (Kg)	Raffred. (mc/min)	A (mm)	B (mm)	C (mm)	Peso (Kg)	Po (W)	Pcc 75° (W)	Pcc 120° (W)	Vcc (%)	Io (%)	LpA (dB)	η 4/4 cosφ=1	η 4/4 cosφ=0.9	η 4/4 cosφ=0.8				
100	1050	640	1150	345	140	520	620	125	40	35	650	7	1750	1100	1600	250	440	1700	1950	4	2.3	48	97.90	97.67	97.38				
160	1120	650	1200	370							800	11					610	2300	2640		2	54	98.07	97.86	97.59				
250	1230	670	1300	405							1050	15					820	3000	3450		1.8	54	98.41	98.24	98.02				
315	1230	670	1400	405							1200	18					1000	3800	4370		1.7	56	98.39	98.21	97.99				
400	1300	760	1480	430							1450	22					1150	4300	4950		1.5	57	98.56	98.40	98.20				
500	1320	760	1500	435							1550	26					1400	5400	6200		1.4	57	98.61	98.45	98.26				
630	1400	780	1650	460							1900	30					1500	6400	7350		1.3	58	98.70	98.55	98.37				
800	1480	790	1700	490							2150	35					1800	8200	9450		1.1	59	98.82	98.69	98.52				
1000	1570	920	1850	520	250	820	1000	200	70	50	2550	42	2250	1350	2400	380	2000	8800	10100	6	1	60	98.86	98.74	98.58				
1250	1600	920	1900	525							2850	50					2400	11000	12650		0.9	62	98.84	98.71	98.55				
1600	1700	940	2120	560							3650	60					2800	12700	14600		0.9	62	98.96	98.85	98.70				
2000	1850	1060	2220	610							4450	72					3800	15600	17950		0.8	63	98.96	98.85	98.71				
2500	1930	1080	2300	640							5250	91					2600	1450	2600		450	4300	19000	21850	0.7	65	99.00	98.89	98.76
																						4300	19000	21850	0.7	65	99.00	98.89	98.76